

WHIRINGA-Ā-RANGI  
HAKIHEA / KOHITĀTEA

**NOVEMBER / DECEMBER 2024**  
**/ JANUARY 2025**

# Kōrero ā Hāpori



**NELSON  
PUBLIC  
LIBRARIES**  
Ngā whare  
mātauranga  
o Whakatū

**DISCOVER  
LEARN  
CREATE**

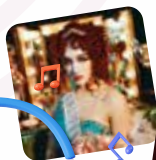


# More on hoopla

Stream top TV series and movies, enjoy great music, and explore your favourite ebooks and comics.

Let's discover something amazing! A library card and pin are all you need for free access.

## STAFF PICKS



### Music

Chappell Roan *The Rise and Fall of a Midwest Princess* - A flawless album and she is the moment.

Nubya Garcia *Odyssey* - enjoy Jazz that weaves through.

Various Artists *The Greatest Showman* (Original Motion Picture Soundtrack) - relive the moments of inspiration and goosepumps.

### TV series

*13 Going On 30*. Such a nostalgia classic.

*Tuesday Club*. A heart-warming film where friendship, love, and dreams come together, all while savouring delicious food.

### From you

**Most popular album:** Dolly Parton's *Rockstar*

**Most popular TV/Movie:** *Absolutely Fabulous* Season 1



## Knitters Group

Get together with others to knit and chat over a cup of tea.

### Library Knitters

**Elma Turner Library:**  
Thursdays, 10am - noon

The last session in 2024 will be on 19 December and will resume on 16 January, 2025.

### Nellie Knitters

**Nightingale Library Memorial:**  
Monday 4, 18 November; 2,  
16 December; 20 January, 1 - 3pm  
Wednesday 13, 27 November; 11  
December; 15, 29 January, 1 - 3pm

## Live Music Series

Held on the last Sunday of each month in the Elma Turner Library, these free performances are a chance to celebrate and discover the talented musicians living in Whakatū.

### Imani J

**Sunday 24 November, 2pm**

Imani-J is the accomplished songwriter Alyahna Sanson-Rejouis. Her acoustic-pop style infused with soulful lyrics reflects a passion for music and dance.

### Trio Jackson

**Sunday 22 December, 2pm**

For over twenty years, Trio Jackson has delighted audiences with their unique musical blend. Come and experience a wonderful ensemble whose diverse performance of a range of musical genres will lift your spirit.

## Device Advice

Drop in with your device to get tech help from our librarians.

**Elma Turner Library:** Thursdays, 2 - 3pm

**Stoke Library:** Tuesdays  
and Wednesdays, 2 - 3pm

## Dementia Friendly Reading Group

Relax while a great story or poem is read to you, and then enjoy exploring it in a fun and friendly way over a cup of tea. This group is open to anyone, no bookings required.

**Elma Turner Library:**  
First Wednesday of the month,  
10 - 11am, 6 November, 4 December

## Book Chat

Come and share a cuppa and discuss what you've been reading this month in a friendly environment.

**Elma Turner Library:** 10.30am - noon,  
12 November, 10 December

**Stoke Library:** 5.30 - 6.30pm,  
20 November, 18 December

## Riverside Reads Book Club:

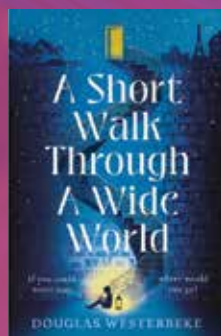
Participants need to register monthly to receive a free copy of the book, and return it prior to/at the meeting. Join us to explore captivating stories from a diverse range of authors and genres.

**Elma Turner Library:** 5.30 - 6.30pm,  
6 November, 4 December



# Summer

## Fiction picks

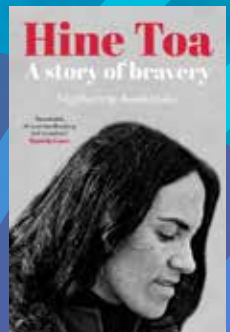
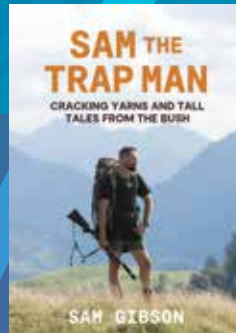
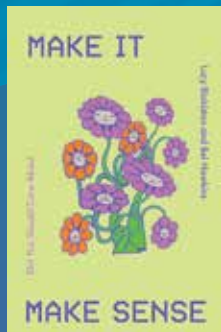
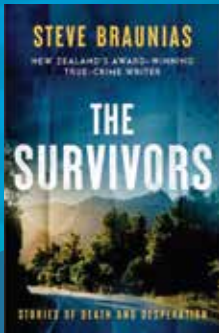






# reads

## Non-fiction picks





SUMMER READING

# Nelson Reads Together

## “Whiria to the Stars”

NOVEMBER 2024 -



Come together and make those summer literary adventures count with Nelson Reads Together!

This year we're encouraging people of all ages to pitch in to help us reach a community reading goal! Every page you log will help get us over the finish line!

Register as an individual, group or sign up the whole whānau to complete reading milestones and receive prizes or kudos from your peers. We will be doing Weekly Prize Draws for all participants.

Your individual achievements will be woven together with others to help us unlock our reading target!

**Kids aged 5 – 12:** once you have logged your pages and complete your badges, check in with us after Wednesday 15 January and received a little reward!

CHALLENGE 2024

# Reads Together "e tāngata"

– FEBRUARY 2025



This summer, we've teamed up with BeanStack so you can easily track your contribution in real time online.

BeanStack is an app designed for you to easily log your progress, complete challenges and earn badges!

Snap the QR code to find out more.



## KEY DATES

**Monday 9 December 2024**

Registrations open

**Wednesday 15 January 2025**

Check Ins open and rewards available (Kids)

**Wednesday 12 February 2025**

End of Nelson Reads Together and Finale Events

# Summer For

## Events for Teens

### Macrame Keyrings

Thursday 5 December, 3.30 - 5pm  
Elma Turner Library

Learn some basic macrame skills and create a stunning macrame keyring. Keep it for yourself or gift it to someone special. Ages 13 - 19. Bookings Required.

### Tote-ally Crafty

Thursday 23 January, 2 - 3.30pm  
Elma Turner Library

Use your sewing, drawing or bedazzling skills to create a bespoke tote bag that reflects your summer vibe! Ages 13 -19. Bookings Required.

## For Adults

### Summer Reading Party

Saturday, December 14,  
2.30 - 3.30pm

Join us for a delightful Summer Reading Party, featuring live music by Belli Clarinetti. Chat with your favourite librarian for personalised book recommendations and get an exclusive first look at the hottest new arrivals before they hit the shelves. Enjoy a cup of tea and a delicious fruit mince pie while you browse.

### Summer Crafternoon

Sunday, December 15, 1.30 - 3.30 pm

Learn basic sewing skills and make a special booky creation for yourself or to give as a gift. Suitable for beginners. Aged 16+. Bookings required. Cost: \$3.

### Decoupage Book Safe

Tuesday 3 December, 3.30 - 4.30pm  
Elma Turner Library

Decorate a Book Safe to hide away your treasures or keepsakes or to gift to someone special. Ages 10+. Booking Required.

### Make a Bookmark

Wednesday 4 December, 3.30 - 4.30pm  
Elma Turner Library

Never lose your place in an adventure again with your own unique bookmark. Ages 5+, Younger children will need the help of their grown-up.

### Fabric Ornaments

Tuesday 10 December, 3.30 - 5pm  
Elma Turner Library

Create fabric ornaments to decorate your space. Ages 8+. Bookings Required.

### Pop-Up Cards

Thursday 12 December, 3.30 - 4.30pm  
Elma Turner Library

Learn how to make your own pop-up cards in this drop in craft session. Ages 5+, Younger children will need the help of their grown-up.

### Summer Snow Globes

Tuesday 17 December, 3.30 - 5pm  
Elma Turner Library

Celebrate the sun and create your summer 'snow' globe. Ages 8+. Bookings Required.



# Events Kids



## Book Tasting

Wednesday 18 December, 3.30 - 5pm  
Elma Turner Library

Get Summer Reading Ready with our book tasting. Explore genres and authors you may not have tried yet, get recommendations from staff and check out the latest books! Aimed at Junior and Senior fiction readers.

## Summer Story Time

Wednesday 15 January, 10.30 - 11am  
Nightingale Library Memorial

Join us for an outdoor, summer-ific Story Time. Stories, songs and bubbles followed by a summer themed craft. Best for under 5s.



## Cardboard Kingdom

Thursday 16 January, 1 - 2.30pm  
Elma Turner Library

Let your imagination free and get crafty in this cardboard makerspace. Ages 5+, Younger children will need the help of their grown-up.



## Fantastic Fandom Fiesta

Wednesday 22 January  
Elma Turner Library

Join Nelson Public Libraries in celebrating all things sci-fi and fantasy! Lots of fandom fun and activities based on all your favourite comics, movies, games and tv shows! Recommended ages 8 - 18, all welcome Wednesday 22 January – programme will be available from Friday 6 December on [nelsonpubliclibraries.co.nz](http://nelsonpubliclibraries.co.nz).



## Nelson Reads Together Finale

Wednesday  
12 February 2025

Elma Turner Library

Celebrate the end of a fantastic summer of reading with us!

## Finale Party for Kids

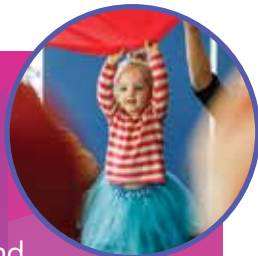
3:30pm - 5pm, ages 5 - 12

We'll reveal the final page count and have a fun filled afternoon of activities, prizes and special guests!

## Wrap Up Evening

Starts at 5:30pm, ages 13+

Share your favourite reads and connect with fellow book lovers over delicious refreshments. Let's wrap up the season with shared kai, fun, and some great books!



# Small Time

A combination of songs, rhymes, and stories in a free and fun 20 minute programme. Best for ages 0 - 2. Runs every week during the school term - Monday 14 October to Friday 13 December.

**ELMA TURNER LIBRARY**  
Wednesdays 10:30am  
**STOKE LIBRARY**  
Fridays 10:30am



# Tots & Tunes

Come sing, shake and boogie along to live music performed by the Hummin' Strummers from Age Concern. Best for ages 0-4.

**ELMA TURNER LIBRARY**  
10.30am  
Last Tuesday of the month  
Last session Tuesday 26 November



# Nau mai haere mai



## Welcome to Nelson Public Libraries

### At the library you can...

- Borrow up to 35 items per library card
- Borrow and return your items to all three library branches
- Access our computers, laptops, printing, photocopying, scanning and WiFi
- Borrow from The Library of Things - board games, sewing machines, kobos, VR headset, lawn games, and Hobby Kits.
- Borrow items from other libraries within NZ through Interlibrary loans
- Attend a diverse range of events and programmes

### Online Library

- Manage your loans through our website or Nelson Public Libraries app
- Access eBooks, audiobooks, eMagazines, comics, manga, films, online newspapers, as well as a large range of databases for free
- Keep up to date with library news, events and reading recommendations via our website
- Search our catalogue, place items on hold and recommend items for purchase
- Research your family history or whakapapa

We have after hours book drops at all our branches so you can return library items at your convenience.

### Loan Periods and Charges

\$2 for items placed on hold and collected.  
This does not apply to Children's and Young Adult items.

Item Type	Loan Period	Charge
Books/Talking Books	4 weeks	Free
CDs, Magazines	2 weeks	Free
Library of Things	2 weeks (excl. VR Headset)	\$3.10
VR Headset	1 week	\$3.10
Book Club Sets	6 weeks	\$3.10
DVDs – Film or TV	2 weeks	\$3.10
Bestseller Collection	1 week	\$3 per week
Replacement for lost library card		\$3.10

Our knowledgeable staff are in the library to assist you.  
Please don't hesitate to ask us anything!



# LEARN



### **Elma Turner Library**

Mon, Tues, Thur, Fri  
9.30am - 6pm  
Wed 10am - 6pm  
Sat 10am - 4pm  
Sun 1 - 4pm

### **Stoke Library**

Mon, Tues, Thur, Fri  
9.30am - 5.30pm  
Wed 10am - 5.30pm  
Sat 10am - 1pm  
Sun closed

### **Nightingale Library Memorial**

Mon, Tues, Wed,  
Thurs, Fri 12 - 4pm  
Sat closed  
Sun 1 - 4pm

**All three branches will be closed from  
25 December to 2 January inclusive.**

Open as usual thereafter.



**NELSON  
PUBLIC  
LIBRARIES**  
Ngā whare  
mātauranga  
o Whakatū

**E** [library@ncc.govt.nz](mailto:library@ncc.govt.nz) **P** 03 546 8100

  Find us on Facebook, Instagram  
or [nelsonpubliclibraries.co.nz](http://nelsonpubliclibraries.co.nz)

